

# FIBER RHINO-LARYNGOSCOPES



High Definition Image

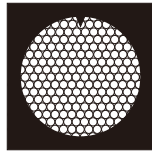
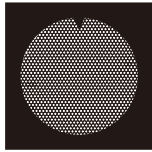
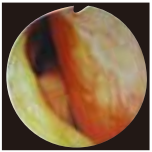


CE 0197





- » Bright image facilitates the diagnosis.
- » Large working channel with 2.2 mm inner diameter.
- » Light weight, high insertion performance, waterproof design.
- » Combined with the VScope endoscopy workstation and video system, a set of very advanced digital endoscope image observation, processing, recording system can be easily formed. Optical image can be conveniently transformed to video image, not only greatly facilitating operation, but also providing unprecedented convenience for teaching and training application.
- » 40 x eyepiece, imported high-definition light guide and image guide.
- » Suitable for all kinds of video system with flexible or rigid scope lens adapters.



	<b>ES-ET6600</b>	<b>ES-EP6600</b>
	Routine diagnosis	Slim type
Field of View	85° Forward viewing	85° Forward viewing
Depth of View Field	3mm-50mm Fixed Focus	3mm-50mm Fixed Focus
Range of Tip Bending	Up 130°, Down 130°	Up 130°, Down 130°
Outer Diameter of Distal End	ø 4.9mm	ø 3.5mm
Outer Diameter of Insertion Tube	ø 5mm	ø 3.6mm
Inner Diameter of Instrument Channel	ø 2.2mm	ø 1.2mm
Working Length	365mm	300mm
Waterproof	•	•

Specification design and accessories are subject to change without any notice on obligation on the part of manufacturer



**ESSE3** srl, Via Garibaldi 30  
14022 Castelnuovo D.B. (AT)  
Tel +39 011 99 27 706  
Fax +39 011 99 27 506  
e-mail: [danielec@esse3-medical.com](mailto:danielec@esse3-medical.com)  
web: [www.esse3.dreamgest.com](http://www.esse3.dreamgest.com)

